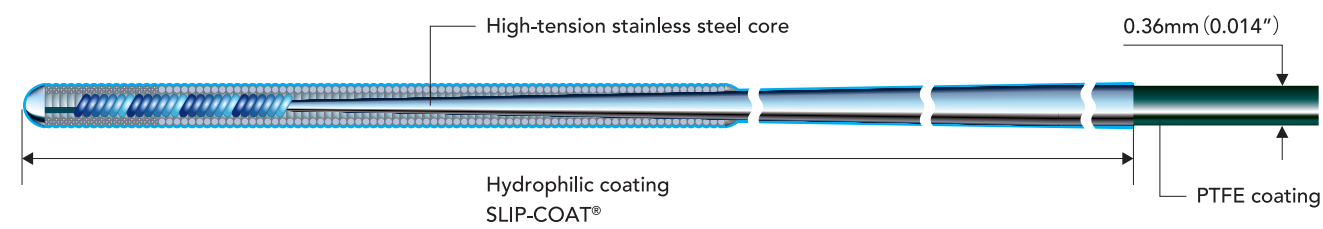


Structure & ordering information



Product	Catalog No.	Diameter	Coating	Usable length	Coil length	<div>galiukas 3-15 cm rentgenokontrastiškas</div> <div>Radiopaque length</div>	Tip shape	Label color	Clip color
ASAHI SUOH 03	AHW14R013P	0.36mm (0.014inch)	Hydrophilic coating (SLIP-COAT®) 52cm	190cm	19cm	3cm	Pre-shape		
	AHW14R313P	0.36mm (0.014inch)	Hydrophilic coating (SLIP-COAT®) 52cm	<div>vielių ilgis - 190 cm ir 300 cm;</div> <div>300cm</div>	19cm	3cm	Pre-shape		

vielių ilgis - 190 cm ir 300 cm;

Coated with SLIP-COAT® coating.

© 2017 ASAHI INTECC CO., LTD.  
"ASAHI", "SUOH" and "SION" are trademarks or registered trademarks of ASAHI INTECC CO., LTD. in Japan and other countries.

Manufactured by:



ASAHI INTECC CO.,LTD.

3-100 Akatsuki-cho, Seto, Aichi 489-0071 Japan  
Contact phone number: +81-561-86-9101  
<http://www.asahi-intecc.com>

Distributed by:



# ASAHI SUOH 03

PTCA GUIDE WIRE





# The significance of “03”

## ASAHI SUOH03 PTCA GUIDE WIRE

Evolutionary coronary guide wire from ASAHI INTECC  
Softest available tip load at 0.3 gf\*

Our new soft as silk guide wire provides new opportunities to  
treat complex PCI cases

### Characteristics

#### 0.3 gf Tip load

- Softest available tip load at 0.3 gf among ASAHI guide wires.
- Lightest market available tip load of 0.3 gf\*.
- Improved shaft design allows superb trackability and crossability in severely tortuous vessels.

#### Flexibility and maneuverability

- ASAHI's proprietary composite core design gives highly effective torque transmission and flexibility.

### Mini pre-shape tip

Mini pre-shape tip for precision.



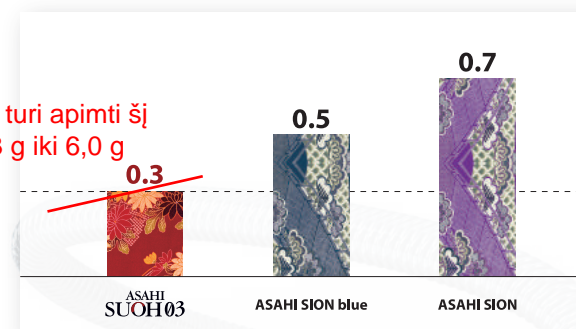
turi būti nusmailinto ir sulydytų  
apvijų galiuko modelis

### Safety tip load and flexibility



#### Tip load (gf)

The softest tip among ASAHI guide wires – 0.3 gf.

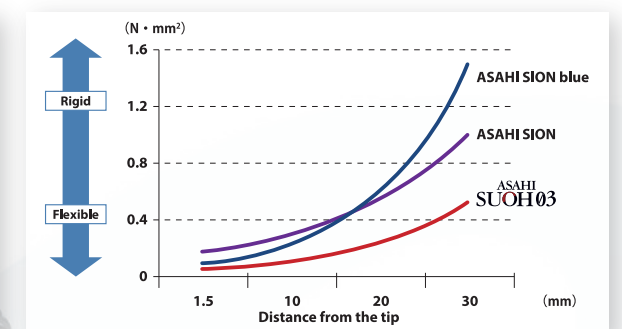


galiuko kietumas turi apimti šį  
intervalą: nuo 0,3 g iki 6,0 g



#### Tip flexibility

Radiopaque distal 30 mm is the most flexible among ASAHI guide wires.

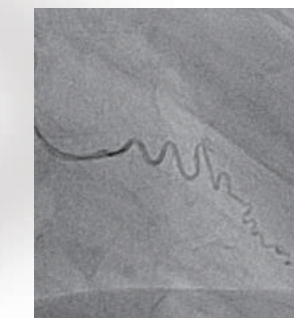


All the data were obtained by company standardized test, which may differ from industry standardized tests.  
All the data do not guarantee that all devices have exactly the same performance with the samples used for tests.

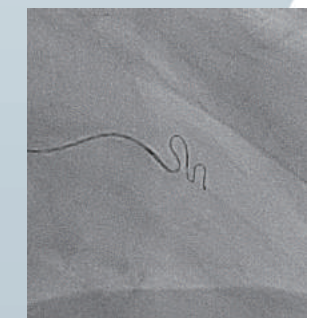
### Superior tip flexibility

Flexible shaft provides superb trackability and crossability in severe tortuosity.

The long radiopaque segment provides good visualization.



Angiogram by tip injection



SUOH 03 Wiring

\*Softest / Lightest available tip load at 0.3 gf is as of Jan 2017.